



**TIME TO MAKE A DIFFERENCE:**

**2012**

*Making followers of Jesus by being followers of Jesus*

**CONNECT**

**GROW**

**SERVE**

## OPENING UP A NEW YEAR

There's something exciting about opening up a present at Christmas time. Holding it. Shaking it. Then pulling on the wrapping paper and experiencing the joy of the gift.



God is giving us all a gift. It's a new year. At Central Church we're looking forward to unwrapping it to see what God has in store for us in 2012. And we hope you are too.

### **The Purpose of this Booklet**

This booklet is designed to give you taste for what's to come. It will explain some of the things we'll be focusing on and reporting on some decisions that have come out of recent planning meetings, the Congregational meeting, and the December Presbytery meeting. The idea isn't to ruin the surprise, but to whet your appetite for what's to come and to invite you to get on board with what Jesus is doing in and through your faith community.

2011 has been a solid year for the church, but we are very aware of the work still to be done. Jesus' charge was to go and make disciples of all nations. Many thousands of residents in our little patch in Ipswich are still far from the Lord and we are those to whom God has entrusted the message. God hasn't called us to make Him great – He's already great without our help. But the reality is that many of our friends and loved ones do not fully comprehend His greatness.

---

*“God hasn't called us to make Him great – He's already great without our help.”*

---

That's where we come in. We get to demonstrate God's greatness in our world. We get to draw back the curtain covering people's lives to reveal Christ in all His glory. This isn't our work; it's our joy and our passion.

We remain 100% committed to our mission statement – *to make followers of Jesus by being followers of Jesus*. Jesus is at its centre and He remains at the centre of all we do and say. It's His church and our joy is in worshipping and serving Him. The mission statement is also about us. It emphasizes that we long to be followers of Jesus and every day is a new day of seeking after Him, following Him closely and doing what He has called us to do. Finally, but essentially, the mission statement is about others – it highlights the mission Jesus gave us all to call others to follow the Saviour with all their minds, hearts, soul and strength.

### **Read, Pray, Act**

As you read this booklet, please start praying and preparing for 2012.

Personally assess how your 2011 looked as measured against the mission statement and make some mental notes about how 2012 can be a year for making a real difference in people's lives for gospel.



## 2012 - what if ...?

A message from Scott Muir, Senior Pastor

There's been a lot of talk about 2012. The talk has been happening for a long time, but the volume was turned up a couple of years ago when the movie '2012' was released.

What's it all about? It's about the end of the world. Apparently, the sun, earth, and Milky Way will align at the galactic equator, on December 20, 2012, which also happens to be the end of the Mayan calendar. The Mayans were an ancient people in South America who had a love for the stars and developed a calendar system that is based on the number 13. The 13<sup>th</sup> set of 13s in their calendar will come about on 20.12.2012, the date of the solar alignment I mentioned.

According to all sorts of websites and the movie, these combined cosmic events, will be the end of the world as we know it. As you dig around and read all that people write about this, you find that a lot of Christians think this is how God's going to end the world. In fact, in a bizarre twist, one archaeologist has found some inscriptions in a Mayan site that talk about things that are supposed to happen in 2012. And he says that though there's a crack through the middle of the writing, it says, "He will descend from the sky."

Now, I'm not going all whacky on you. But given that Jesus told us that we don't know the time of his return and given his warnings to be ready because it will catch many people unaware, I thought it might be worth us turning our minds and actions to how we'd want our lives to look *if* Jesus was coming back in 12 months.

What would you do differently?

What would you stop doing?

What priorities would be challenged?

What action would you take when it comes to loved ones who don't know Jesus?

In 2012 at Central Church, we're going to ask ourselves that question seriously and see what difference it makes in our lives and our church. Paul told the church at Thessalonica to be "alert and self-controlled" in this age as we await Jesus' return (1 Thessalonians 5:6).

### **2012: Time to Make a Difference**

So it's time to make a difference. In fact, what if 2012 was the only time you had left to make a difference?

*The Vision* we have for Central Church in 2012 is to see everyone making the most of each day for the whole year. It's about living intentionally *making a difference* for Christ at home, at work, with friends and family – everywhere. We

want to see individuals *making a difference* in people's lives and as a church we want to make a difference in our city.

How will you make a difference in 2012?

---

*"What if 2012 was the only time you had left to make a difference?"*

---

## JANUARY

### Floods

Central Church mobilized teams of people who helped in the clean-up process in different parts of the city.



### Solomons Visit

We were also blessed to have a visit from a group of young people from the Solomon Islands who shared their passion with us and we shared some discipleship and leadership skills with them.

## FEBRUARY

### Ministry Co-ordinator

Peter Skerman started on staff in the position of Ministry Co-ordinator. As part of his role, he took on Ipswich Assist which has benefitted greatly from his leadership. Peter has also worked with people to get them serving in the best ministry for them.



## MARCH

### Lifetime at Bremer State High School

In March, a team from Central led the Lifetime Religious Education programme at Bremer State High. We gave the day a 'space' theme, talking about all that God had created. And though His creation is huge, he has a special love for His people and a special purpose for us in this world.



# 2011 AT A

## APRIL

### Memorial for Lives Lost

In April, we were able to help the YoungLife and Ipswich Urban Mission teams with the massive memorial service at Queen's Park for the three young people killed tragically in a car accident at Goodna. Central members looked after a prayer tent at the memorial.



## MAY

### Family Fun Day

In May we partnered with Ipswich Assist to be part of the Ipswich City Council Family Fun Day – an event designed to help defence force families connect with the local community and local community groups.





### Celebration with South Sudan

We celebrated with our South Sudanese brothers and sisters as their new nation was born. Our celebration service was a highlight of the year.



### Building Works in Full Flight

By August, our office renovations were in full flight. Many volunteers and tradesmen worked tremendously hard to gut the Video Ezy building and start to get it ready for us to use as an office and renovated auditorium.



### Solomons Mission

Kim Whitmore led another team of volunteers to the Solomon Islands to continue the work of literacy for the Islanders. The vision is to keep going until the whole region can read the Word of God for themselves.

# GLANCE



### Church Camp

A record number of people attended our annual church camp at Camp Somerset. This year, our guest Steve Addison, challenged us about being caught up in the world-wide movement that Jesus started 2000 years ago.



### Auditorium Opened

At last it happened! We held our first services in the enlarged auditorium. Seating capacity has been increased and a better stage area has been created so that all people in the congregation can see what is happening.

**JULY**

**AUGUST**

**SEPTEMBER**

**OCTOBER**

**NOVEMBER**



## TRUE STORY

*The gospel makes all the difference in people's lives. We are so pleased to have seen God working through Central Church to impact the lives of real people ...*

**NATHAN & TAMMY  
BOORER**

We really didn't have anything to do with Jesus or church. Our only connection was an old school friend of Tammy's who went to church, named Heather. Heather often asked us over for dinner, but we lived pretty unsocial lives and kept avoiding it. Even when we kept saying 'no', Heather was always so nice. She was also persistent. She kept asking.

Eventually we agreed and arranged for Heather and her husband, Brent, to come to our place. I (Nathan) wasn't looking forward to it. I know Brent and Heather were Christians and I just wasn't interested in that stuff. But I was amazed. Brent came around and we talked all night – well, he talked and we listened. But it was really interesting. I'd never heard anyone talk about Jesus and the Bible like that.

The next day we went to their church, Central Church. We were blown away by the experience. What struck us was how warm and welcoming people were. They were very genuine and very different to other people we know. We felt at home and immediately made lots of new friends – friends we could really talk to about our struggles.

Since that first day we have understood the forgiveness that Jesus gives. He has made an incredible difference in our lives. I had for a long time struggled with substance abuse but I've found freedom in the gospel and support from people who have helped me with this. Life can still be a struggle, but I feel like we now have the people around us and the faith in God to manage. In the Bible we have found a source of information for all of life's situations.

We went on Church Camp and we're in a homegroup which is great. We've also just finished the Back to Basics course. Getting a good grip on what the Bible says is really important to us and Back to Basics and the people we met with have helped us heaps.

---

*“What struck us was how warm and welcoming people were.”*

---



**IN 2011 WE HAVE TAKEN BIG STEPS WITH TOWARDS BETTER FACILITIES FOR MINISTRY...**

**IN 2012 WE WILL SEE OUR AUDITORIUM RENOVATION COMPLETED**

2011 has seen a great step forward with our facilities. What has been a very long journey is now a short way off completion. The journey began many years ago when we first started to discuss how we were going to expand for future growth. Many ideas were mooted, but the Lord presented us with the right plan at the beginning of 2010.

Stages 1 and 2 are virtually complete. The staff is comfortably settled in the offices and on November 20 we held the first services in the newly opened Auditorium space.

#### What Next?

In 2012 we will start on stage 3 – the outside areas. At the Congregational Meeting in November, the congregation approved some small amendments to the plan to fit within building regulations.

This next stage will see a friendly outdoor meeting area developed where the playground is currently situated. This will create an inviting entrance into the current walkway which will be enclosed to form a new foyer area. The kitchen will be moved outside the current Auditorium external wall and will provide a servery into the new outdoor meeting area.

The playground will be moved to the other side of the foyer, right next to the crèche area. We will also make space for the older children to play ball games.


Presbytery has approved the amendments and they are now before the PCQ Property Board for approval. We also need to submit them to some government agencies before work can begin. We are praying this work will be well underway if not near completion, but the middle of the year.

# TEACHING, EMPOWERING, EQUIPPING

## STAFF PLANS FOR 2012

It is our prayerful plan to fill the Connect Grow Serve discipleship pathway in 2012. We are excited about this as it will strengthen our strategic discipleship and mission plan.

At the November congregational meeting, we created the two new positions of Connect Pastor and Grow Pastor and we reported on the appointment of a new Ministry Co-ordinator (the 'Serve position'). Peter Skerman will take up the role of Connect Pastor and Paul Blake will step into the Ipswich Assist Programme Manager's chair from January 2012. We have begun the process of seeking an enthusiastic and gifted leader and Bible teacher to take on the Grow Pastor position.



**SENIOR PASTOR**  
 Sunday services,  
 Effective Preaching,  
 Leading Staff and Elders,  
 Setting vision,  
 General pastoral oversight



**CONNECT PASTOR**



PETER SKERMAN

**GROW PASTOR**



BEING SOUGHT

**MINISTRY CO-ORD**



NATALIE NEWELL

### AREAS OF RESPONSIBILITY

Personal Evangelism (To equip the people of Central Church share their faith regularly and effectively)

Assimilation (To develop processes to help assimilate newcomers into the life of the church ie. closing the back door)

Collective Evangelism (To work alongside groups that have an evangelistic aim to ensure they are supported and effective)

Preaching and Teaching (Will preach from time to time as needed)

Leadership (To work with the Snr Pastor on the leadership and direction of the church and be part of key leadership meetings)

### AREAS OF RESPONSIBILITY

Homegroups (To co-ordinate the homegroup ministry, provide training and support of group leaders, train new leaders, ensure networks of pastoral care are established through homegroups and evaluate and report on group health)

Training (To organise training of church members through courses)

Pastoral (To work alongside the Ministry Team in dealing with extraordinary pastoral care issues and oversee with work of the Pastoral Care Team)

Preaching and Teaching (To be a key part of the preaching team and help prepare homegroup material)

Leadership (To work with the Snr Pastor on the leadership and direction of the church and be part of key leadership meetings)

### AREAS OF RESPONSIBILITY

Individuals (To develop and manage processes and strategies to help church members feel equipped to use their gifts and abilities and contributing to the ministry effort of the church)

Ministry Teams (To liaise with and help resource existing ministries)

Church Management and Support (To provide additional support in areas of communications and church management)

Leadership (To work with the Snr Pastor on the leadership and direction of the church and be part of key leadership meetings)



## INTRODUCING NATALIE NEWELL

### MINISTRY CO-ORDINATOR

Natalie is the newest addition to our Ministry Team at Central, starting in the Ministry Co-ordinator role in January 2012.

It's a bold step of faith for Natalie. She and her family moved up to Queensland from Grafton, NSW, in the middle of 2011, being very open to the Lord's leading in their lives. The Lord led them to Central Church and now, very much out of the blue, He's taken them an extra step into serving on our staff team.

Natalie trained as a physiotherapist and met her husband, Rob, studying the same degree. In more recent years has had the joy of caring for their three wonderful children.

Working as a physiotherapist might seem like a strange training ground for ministry, but it's a 'hands-on' (pardon the pun) people job where you have to be a great listener and have the ability to understand people and what they really need – a lot like ministry.

Natalie's faith is central to everything she does. She has a passion for the local church and has had significant experience in children's ministry, connecting churches into the local community, church management committees, ladies Bible study leadership and hospitality.

While a formal ministry job is new to Natalie, the elders have been really impressed with her love for God and for people, not to mention her outstanding people skills. What's more, we think it will be a great asset to have a woman on the ministry team to bring that much needed female perspective!

Please encourage and pray for Nat as she enters into this exciting phase of ministry. She will be working 20 hours each week in the role.

### STUDENTS FOR THE MINISTRY

Central is committed to sending workers into the harvest field. An important part of sending is training. We are encouraged by those who have taken the step to pursue formal ministry studies at QTC.

#### **Rosie Skerman**

In 2012, Rosie will be in her second year at QTC and is transitioning into the Bachelor of Ministries course. Rosie is interested in children's and youth ministry.

#### **Josh Aason**

Josh will continue part-time studies towards a Bachelor's degree.

#### **Adam Alback**

Adam has been accepted to start the WordWorx course at Diploma level with a view to going into children's ministry.

# FACTS AND FIGURES 2011

2011 saw a small decrease in overall attendance at Sunday services from 2010 and a similar decrease in giving.

Total Attendance 2010 = 365 per week

Total Attendance 2011 = 352 per week

It was disappointing to see the offering go down given the surge we experienced in 2010. With thanks to the Committee of Management, we have been able to keep the expenses down so that the books are close to balanced for the year.

Average weekly offering 2010 = \$7008

Average weekly offering 2011 = \$6711

Budgeted weekly offering 2011 = \$7802

With these figures in mind, the Committee of Management has set the budget for 2012 at \$7600 per week which we are confident is achievable as people are enthused by the vision and direction of the church.

Approximately 70% of our offering comes from those who give electronically.

## OTHER STATISTICS

### Homegroups

Central Church has 20 homegroups and accountability groups meeting regularly across the city. While actual numbers fluctuate, there are approximately 180 people (about 63% of our average adult attendance) in these groups.

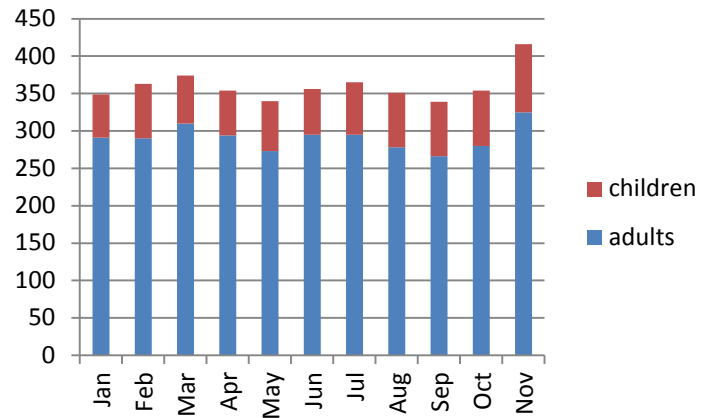
### New Members

14 people have come into membership with about 12 more ready to become members after the most recent Back to Basics course.

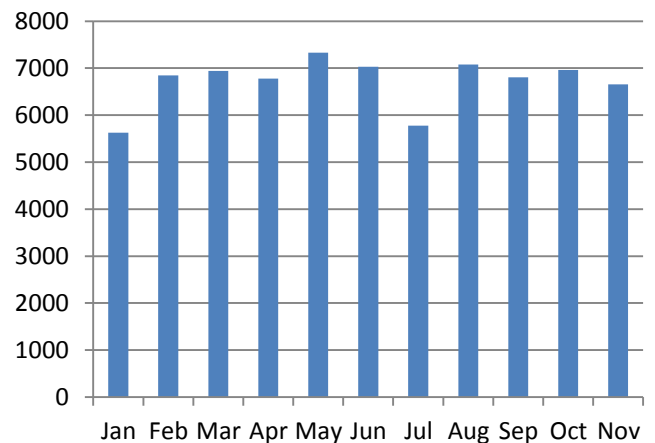
### Church Camp

We had record numbers at our annual church camp this year – 170 people attended for at least some part of the camp.

2011 SUNDAY ATTENDANCES  
AVERAGE: 288 ADULTS 64 CHILDREN



2011 TOTAL OFFERING  
AVERAGE: \$6711



## GIVING ELECTRONICALLY

It's easy and an intentional way to honour the Lord financially.

### Direct Debit Giving

If you would like to give via direct debit, the details are as follows:

BSB: 034 189

Account Number: 19 6363

In the reference section just put "offering" and the time of the service you most regularly attend (eg: 6:30pm)

# SPIRITUAL LEADERS FOR 2012

## NEW ELDERS TO BE ELECTED IN 2012

ABOVE REPROACH  
BLAMELESS  
UPRIGHT  
HOLY  
HUSBAND OF ONE WIFE  
TEMPERATE  
SELF-CONTROLLED  
DISCIPLINED  
RESPECTABLE  
HOSPITABLE  
ABLE TO TEACH  
NOT GIVEN TO  
DRUNKENNESS  
NOT VIOLENT OR QUICK  
TEMPERED – GENTLE  
NOT QUARRELSOME  
NOT LOVER OF MONEY  
NOT PURSUING DISHONEST  
GAIN  
MANAGE FAMILY WELL  
HIS CHILDREN OBEY HIM  
CHILDREN ARE NOT WILD  
NOT A RECENT CONVERT  
GOOD REPUTE WITH  
OUTSIDERS  
LOVES WHAT IS GOOD  
HOLDS FIRMLY TO THE  
MESSAGE  
ABLE TO ENCOURAGE  
OTHERS AND REFUTE  
ERROR

In 2012, we want to ordain new elders for the church. Session has specified that we would receive up to 6 new elders. Under our system, suitably qualified men need to be nominated and trained and after that process an election takes place.

Nominations have closed. The men who will undergo the training course early in 2012 are:

Joshua Acaon  
Mark Davies  
Andrew Johanson  
David Jeffrey  
Russ Klawitter  
Thomas McPherson  
Brent Manning  
Chris Pengelly  
Richard Shannon  
Peter Skerman

It is a great sign of health in the church that there are godly men amongst us who would be capable and equipped to fulfill the role of elder. It is a crucial role in the life of the church. Elders are charged with spiritual leadership and oversight of the church and to ensure a Christ-centred approach to ministry and mission is maintained. Scriptures lay out some key character requirements in 2 Timothy and Titus.

Please be in prayer for this process and for the men who have been nominated.

# HOW CAN I MAKE A DIFFERENCE?

By renewing your commitment to Jesus in 2012

By committing yourself to others through a homegroup

By getting involved in ministry

By stepping outside your comfort zone and serving in a way that you know will stretch you

By talking to unsaved people about Jesus

By praying a lot

By getting trained for ministry

By mentoring another believer

By increasing your financial commitment to the church

By seriously considering going into full-time ministry.

---

*I live in the Spirit. I will not run from danger, flinch in the face of sacrifice, hesitate in the face of adversity, compromise with the enemy, drink from the pool of popularity, or settle for less than the victory of souls. I won't give up, shut up or let up until I have held up and preached the Gospel of Christ. I live in the Spirit. I will go until He comes, give until I am empty, and preach till all I can tell have heard. I live in the Spirit (St Augustine).*

---

## **Central Presbyterian Church Ipswich**

Cnr Limestone & Gordon Streets, Ipswich Qld 4305

Phone: (07) 3413 1050

[www.centralchurch.net.au](http://www.centralchurch.net.au)